



Pixel Recognition Based on Cross Correlation

Ehsan Saeidpour Parizy

An Aimed Pixel Velocity Curve



Fig A: Row: 135, Column: 91, Original Signal

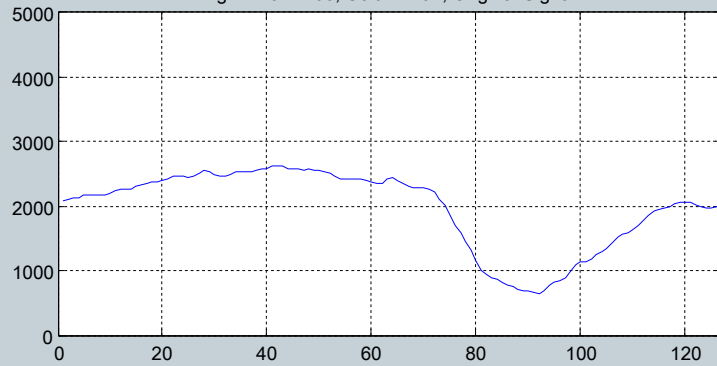
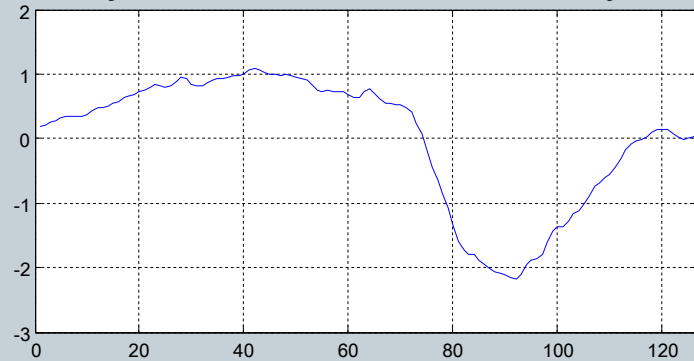
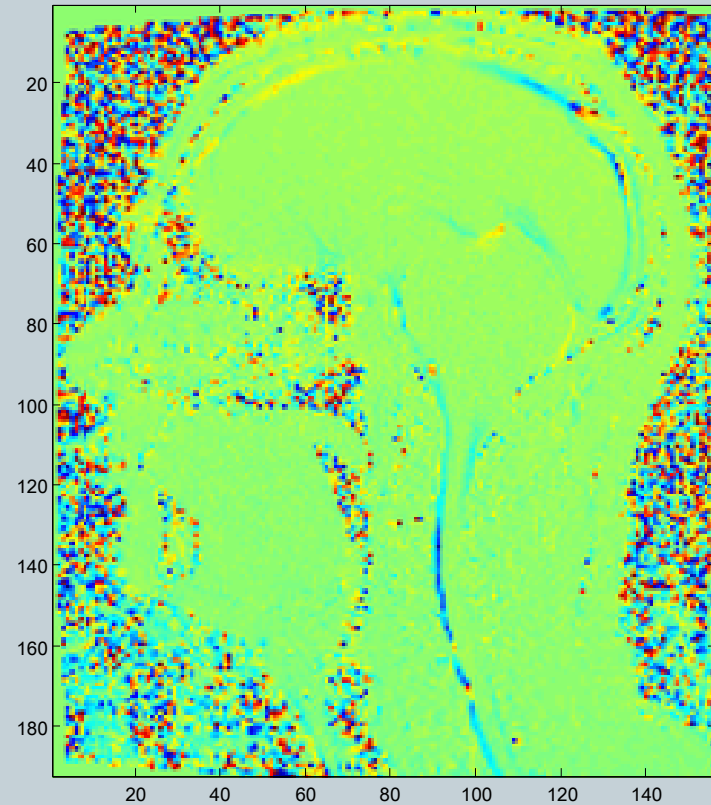


Fig D: Row: 135, Column: 91, Normalized, Mean Reduced Signal



Original Image



First Randomly Selected Point Velocity Curve



Fig A: Row: 105, Column: 40, Original Signal

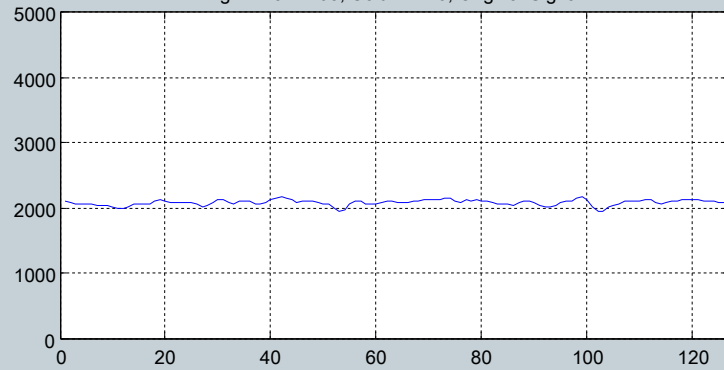
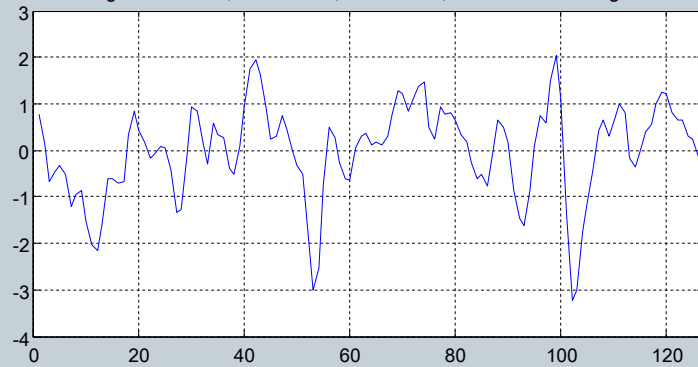
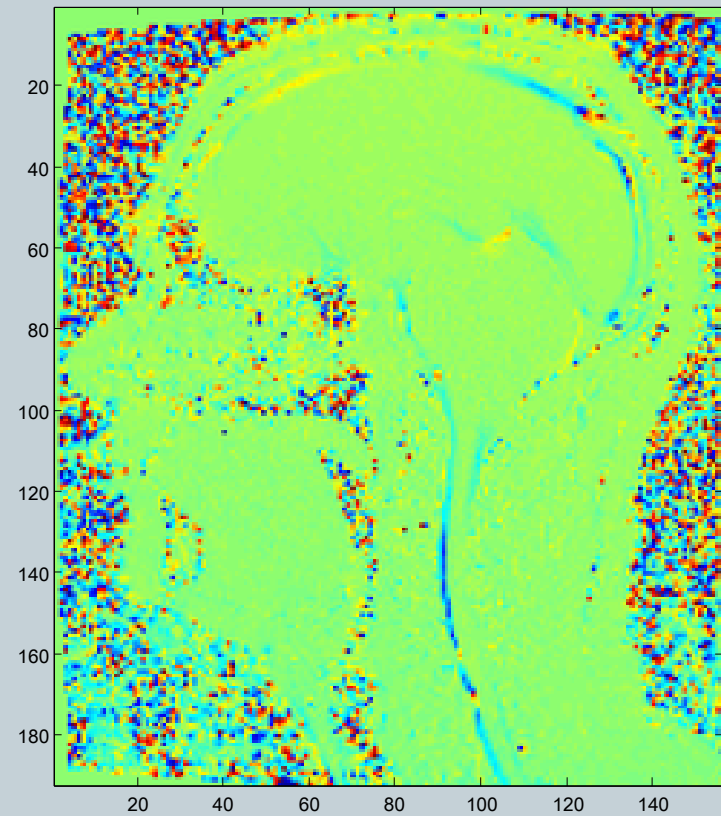


Fig D: Row: 105, Column: 40, Normalized, Mean Reduced Signal



Original Image



Second randomly Selected Point Velocity Curve



Fig A: Row: 135, Column: 95, Original Signal

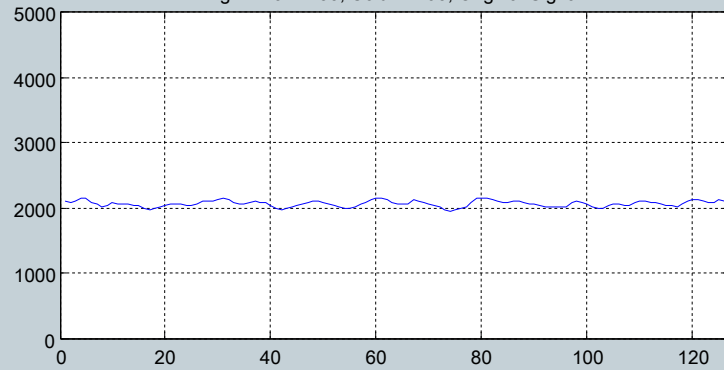
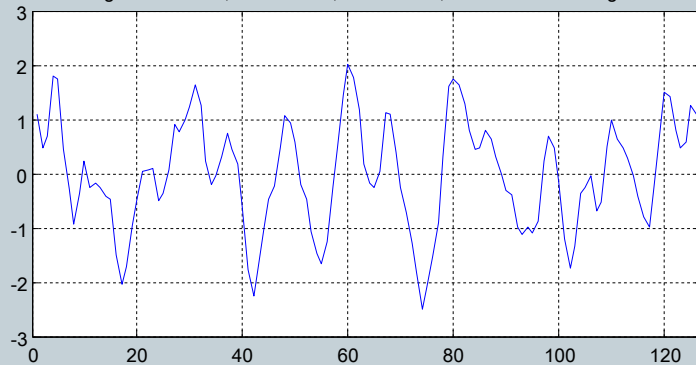
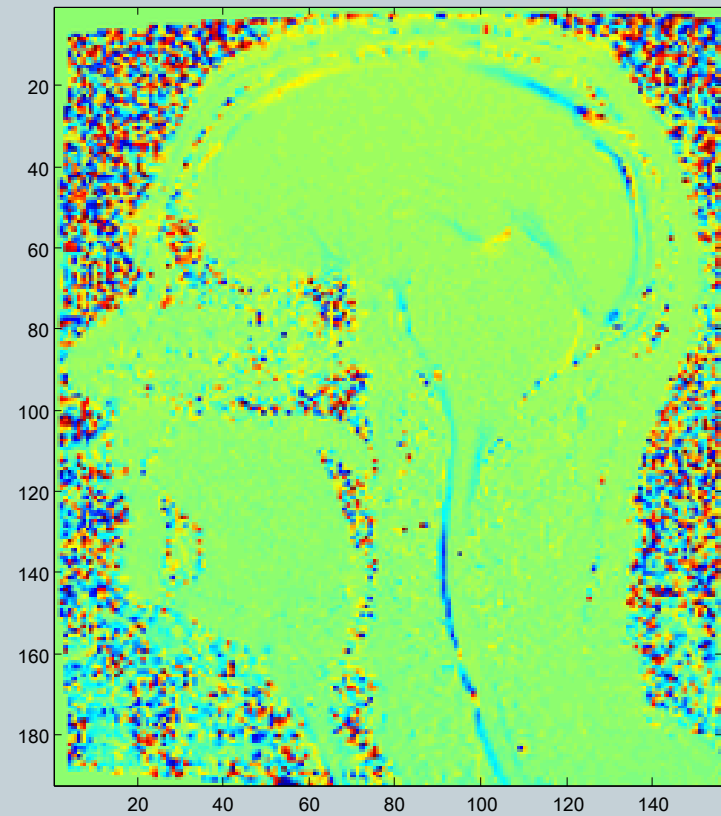
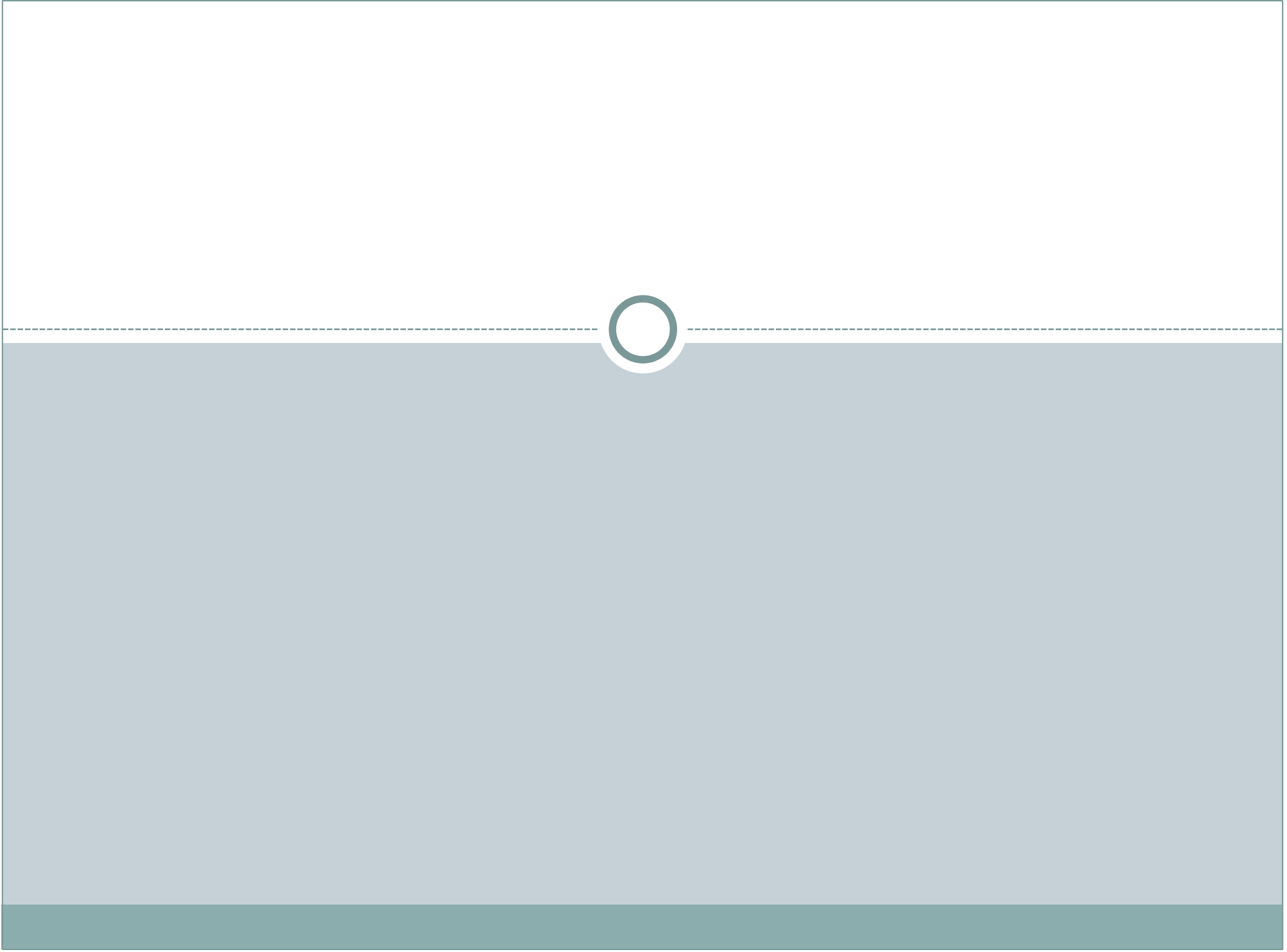


Fig D: Row: 135, Column: 95, Normalized, Mean Reduced Signal

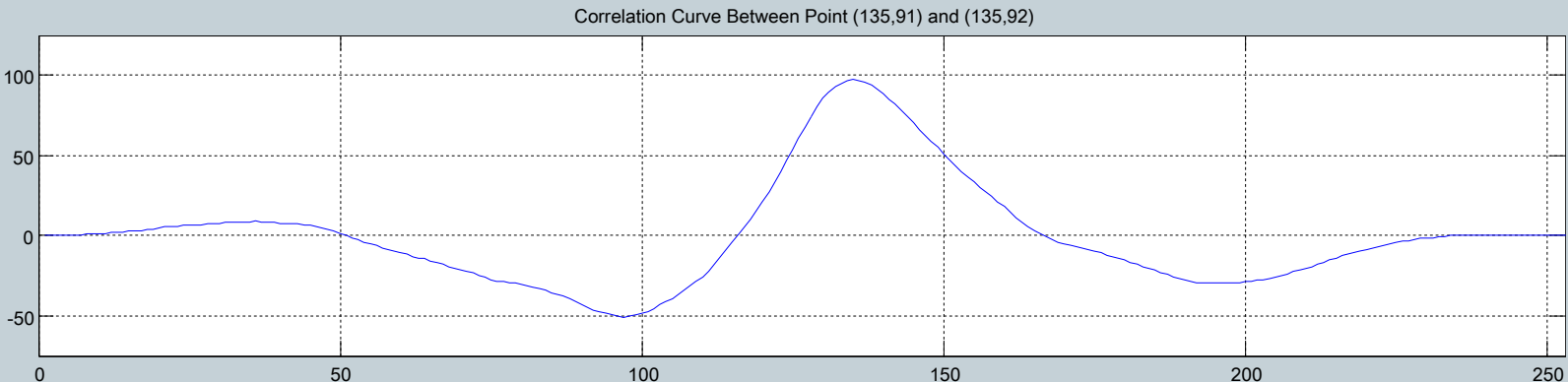
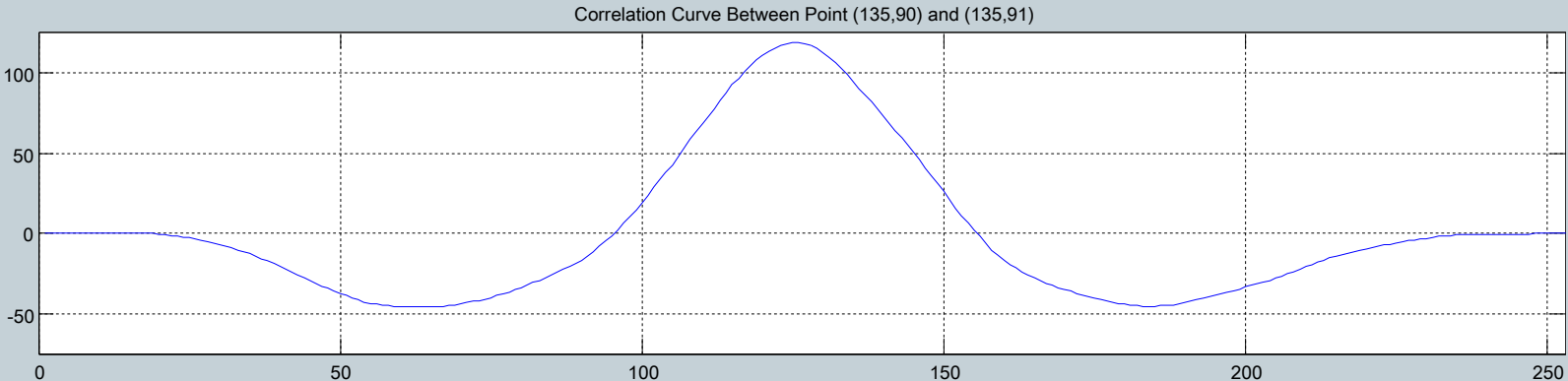


Original Image





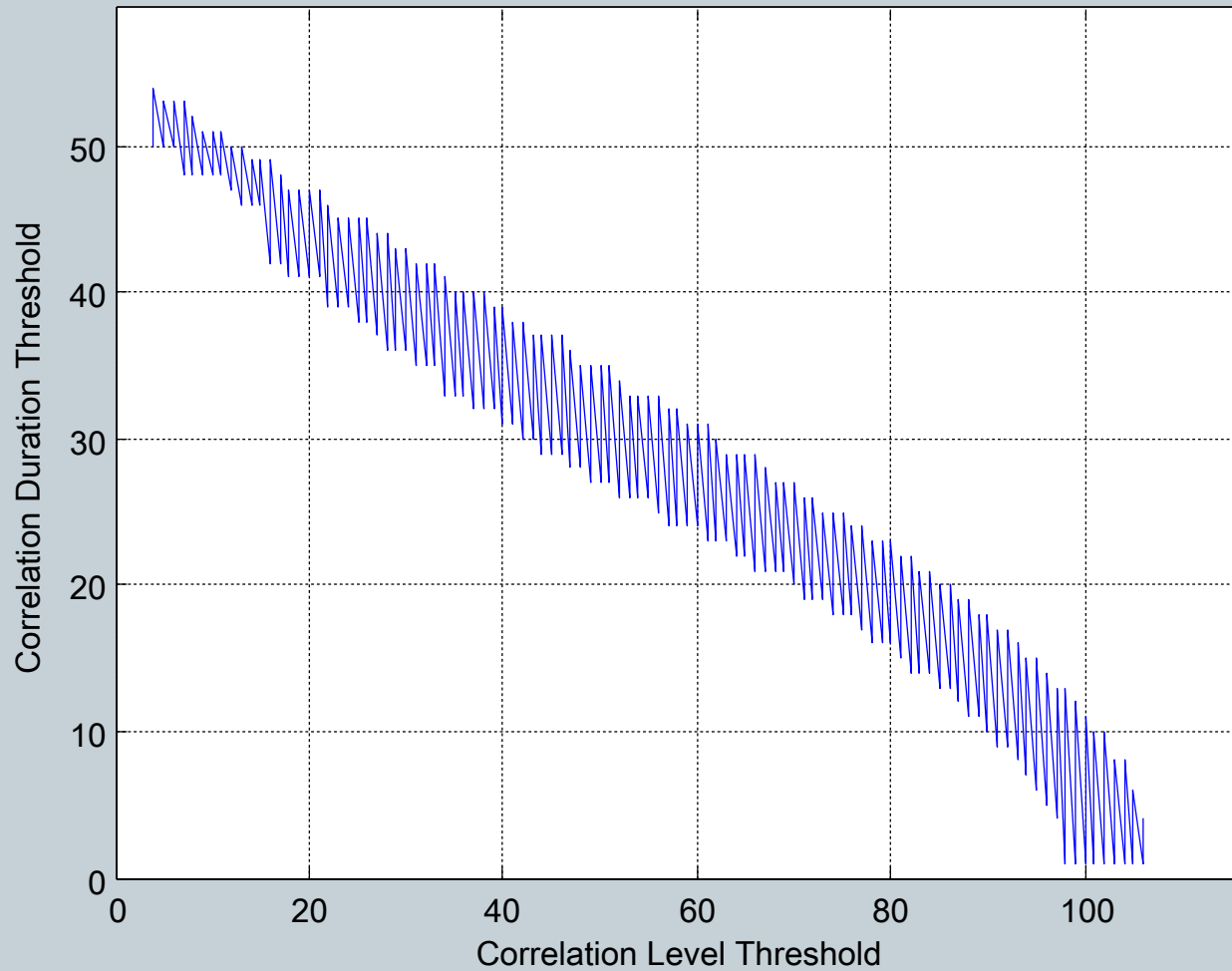
Cross correlation result for three presented points



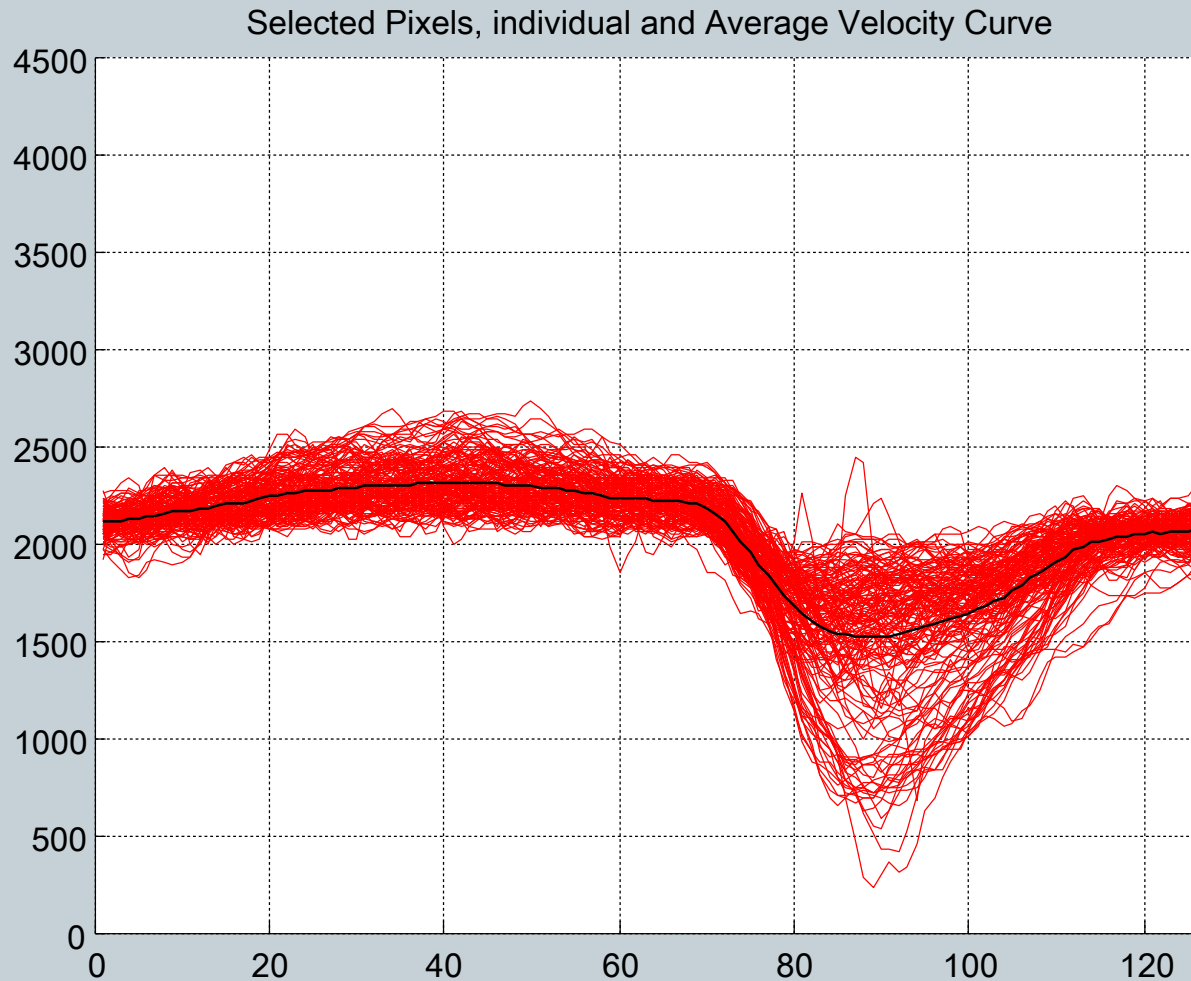
Possible threshold selection to meet mask requirements



First Step Acceptable Area



Possible threshold selection to meet mask requirements



Wave movement along spinal cord during the time



Wave Movement Along Spinal During Time

