

# HOW TO USE THE MUG HEAT PRESS

## Obtain a Mug...

1. To use the Mug Heat Press, you are going to need a blank white mug. For the ones provided by the lab, dimensions are already set up.
2. Once you have your mug, you need to print your image on paper with the dye sublimation printer. See its instructional for more details.

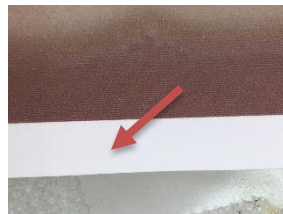
## Preparing Image...

1. Following the Dye Sub Instructions, prepare your image.
2. When you are ready to set your image height and weight, set your height to **3.5 Inches**, as this is the max height on the mug. The max width is **9 Inches**.
3. Follow the rest of the Dye Sub steps, and print your image.

## Preparing Mug...

1. With your image printed, you now need to attach it to the mug.

2. After cutting the image out and leaving a small white border, tape the image to the mug in the desired position on the mug.



**\*Note-** When placing the tape, make sure it is only over top of the white border you left when cutting out the image. If it covers the image at all, it may result in a distorted image under that spot.



3. With the image secured, you are ready to heat press the mug.

## Heat Pressing the Mug...

1. Head over to the Mug Press, and turn it on with the switch on the back side.
2. Once turned on, the display will show three zeros. Wait until the display reads **SBY** before proceeding.

3. Grab the brown transfer cloth sitting in the Mug Press, and wrap it around your mug so that the paper is completely covered by the cloth.

4. Lower the mug into position in the Mug Press, and close the level on the right side. The timer should start automatically for 3 minutes.

5. After the time is up, a beeping will sound. Release the level, and remove the mug by the handle.



## After Heat Pressing...

1. The mug will be hot, but it is safe to touch by the handle.
2. Once the mug has cooled enough, remove the paper in one, even movement, and remove any pieces of tape.