

HOW TO USE THE FULL COLOR PRINTER

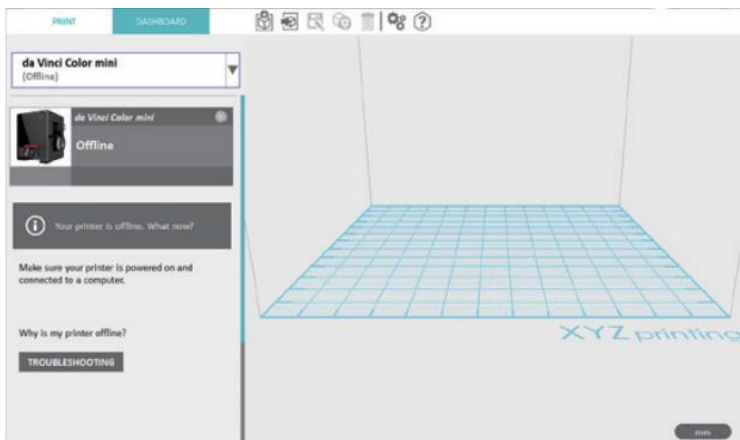
Prepare the printing software...

1. Turn on the printer.
2. Start XYZ Maker > XYZ Print program in 3D lab folder on the desktop.



Choose Printer...

1. Choose "da Vinci Color Mini" from the drop-down menu in the dashboard.



Load object in program...

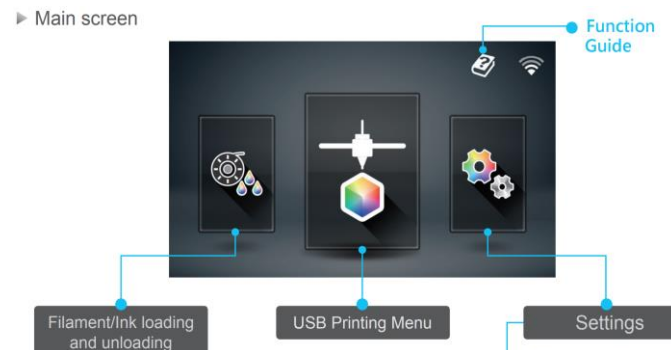
1. Click the [IMPORT] button beside the [Dashboard] tab in the top-middle, then locate the STL file that you want to print.



2. Click the STL file, then click [Open].
3. You can adjust the object size, printing position and angle once the file is loaded.
4. To print color objects, save the file to be printed in the obj format and load it in the XYZprint.
5. Specify a print quality mode (Draft, Normal, High Detail) from the Print Settings (top-left corner) in Print type. **NORMAL is recommended; other modes print slowly.**
6. If supports are needed, choose "Enable Supports" from the Support list in the bottom.

Loading Filament...

1. Tap Filament Load and Unload in the main screen on the printer and select filament.

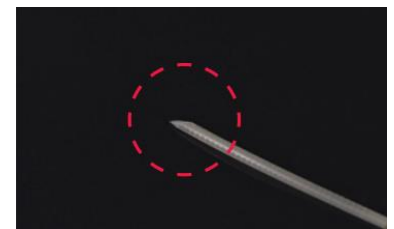


2. Place the filament spool on the spool holder and then tap Filament option on the printer screen.

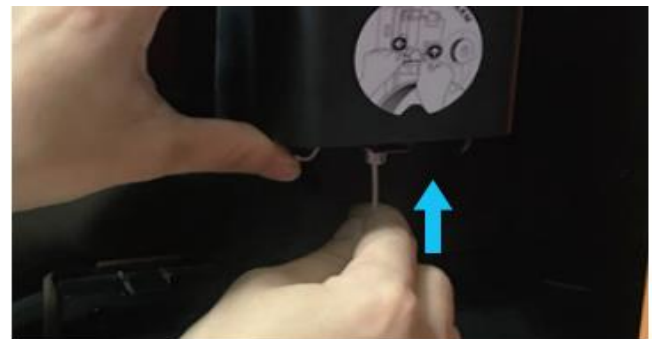
3. In the [Filament Settings] tab choose "LOAD" option and confirm the operation.



4. Trim filament at 45 degrees with scissors so that it has a sharp edge.



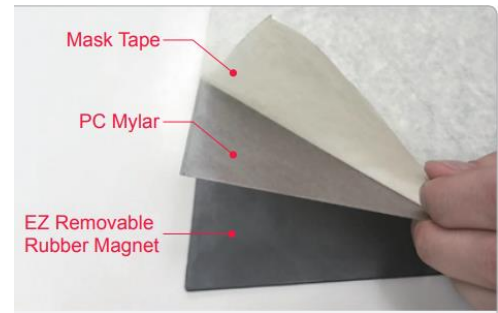
5. Insert the filament into the feed module, it will be automatically loaded.



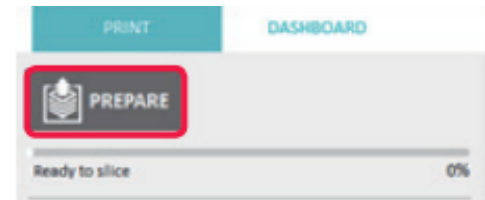
6. Once the filament has extruded from the print head, the filament will be successfully loaded. Tap the screen to confirm and continue.

Unloading Filament...

1. Tap Filament Load and Unload on the main screen.
2. Tap "UNLOAD" and confirm the operation.
3. Confirm the unloading operation.
4. When the print head has been warmed up to 220 degrees. The feeding motor will eject the filament.
5. When the unloading operation completes, tap confirm.

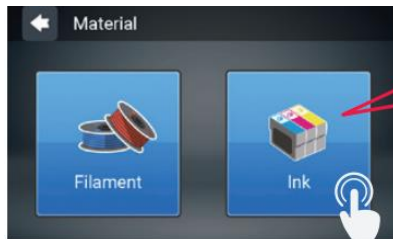


2. The Prepare function can convert an obj file to a .3cp file.

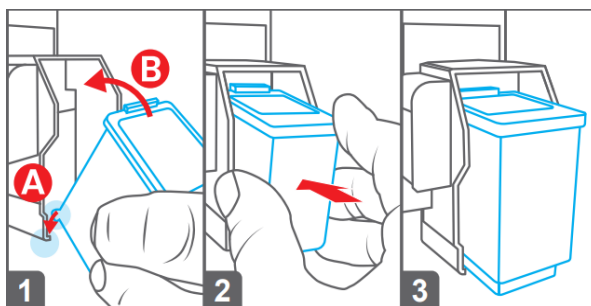


Change INK Cartridge...

1. Tap INK on the main screen of the printer.
2. Tap Change Ink and tap to confirm.
3. Wait until the cartridge moves to the center of the print bed, and then change the ink.
4. Tap the PROCEED after you change.
5. Please follow the steps from the bottom picture while inserting the cartridge.



3. Choose PLA filament under the Material column.
4. You can change related settings to the desired printing result and effect when the object is loaded.
5. Once the file is edited and adjusted, click on Print to output the object. The printing operation will start after the file is sliced.
6. The printer begins heating the build plate and nozzle. When they are fully heated, printing will begin.



Start printing...

1. To ensure that your object sticks to the build plate, attach the PC mylar and mask tape on the EZremovable rubber magnet. **Do not use glue stick with this printer.**

After printing...

1. **Do not use a scraper nor knife to remove your part!** These will damage the build plate.
2. Wait until bed cools to room temperature. **This is important!**
3. The build plate is removable rubber magnet. Lift its edges to remove.
4. **Gently** flex the plate and your part will pop-off.

