

HOW TO USE THE ROLAND BN2-20A PRINTER

Start utility program...

1. Start Roland DG Connect Hub on desktop (in 3D Lab > Roland BN2-20A folder).
2. If asked to sign-in, click Already Registered > Sign-in. When prompted, enter tjh1@uakron.edu for email address and 3DLAB!!! for password.
3. When utility window appears, **wait for status** under BN2-20A_KGC1552 changes from "Loading" to "Standby". Then click green "cloud" icon beside it.
4. On right side of window, click Open next to BN2 Utility.
5. If you see "The machine is in sleep mode.", click Recover.
6. You will see a screen with four colored bars.

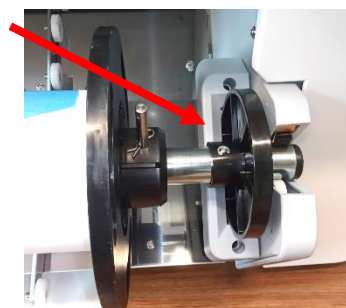


BN2-20A_KGC1552
Loading

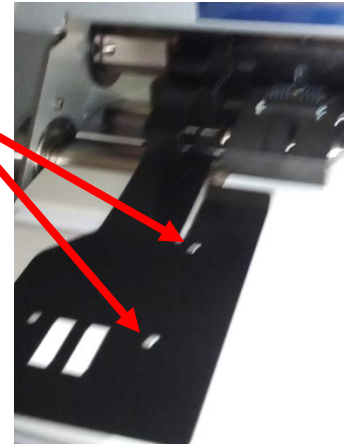


Load media...

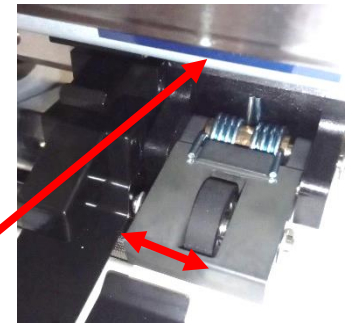
1. Click blue button labeled "Setup" in lower left corner.
2. From the list, choose media type you are using, then click OK.
3. **If correct media is already on the media shaft in the printer, skip to Step 7j.** Otherwise...
4. Pull media shaft toward you remove it.
5. Remove existing media roll...
 - a. Flip-open release lever on left flange, slide flange off shaft.
 - b. Remove media from shaft.
6. Install new media roll...
 - a. Slide-on new roll so that media's flap faces down, toward you.
 - b. Slide left flange onto media shaft.
 - c. Close locking lever.
 - d. Place shaft in printer so that double flange is on **right side** of printer.
7. Load media onto platen...
 - a. Flip-open clear access window.



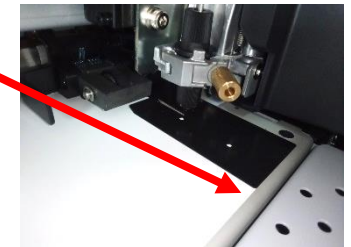
- b. Feed media inside printer (above two arrows) until it appears in printing area above.
- c. As media appears, slide it **under** the black guides on the left & right.
- d. Slide the **left** black guide so that the media's edge lines up with two vertical holes on guide. **Note: Only move guide by pushing on the rear of the guide.**



- e. Slide roller near the **left** guide so that roller wheel is 10mm from edge of paper. **Note: Push rear of roller to slide it.** Roller must stay within blue area marked above it.



- f. Pull media forward to be flush with black guides.
- g. To square-up media, hold-down center of media in print area, then tighten roll below with your other hand.
- h. Close loading lever.
- i. Close clear access window.
- j. On the Load the media... screen, click OK.
- k. Wait for printer to load the media.



- l. **Note: Write-down the Width: value in the top-right corner of the screen.**
- l. Minimize BN2 Utility window.

Start design software...

1. Start FlexiDESIGNER VersaSTUDIO Edition on desktop (in 3D Lab > Roland BN-20A folder).



2. Change important settings...

- a. Double-click double-arrow icon (top-left corner where horizontal and vertical rulers intersect).
- b. Choose Inches for Units field, click OK.
- c. In DesignCentral window in top-right corner of screen, enter Width: value from BN2 Utility, press Enter. Also enter estimated height (will fine-tune later), press Enter.



Import graphics/pictures...

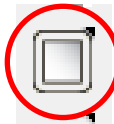
1. Click File > Import menu to import graphics.
2. Locate your graphic then click OK.
3. Click inside the document area to place it.
4. Resize graphic as needed.

Notes: PNG format is best.

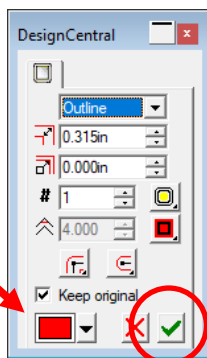
- To create custom outline around your image, make sure image's background is "transparent" instead of white. Photoshop can fix this.
- PNG files cannot be too large as they may crash FlexiDESIGNER when importing. Use Photoshop to reduce image resolution if needed.
- To zoom in/out, hold-down [Ctrl] while rolling mouse wheel.

Create cutting outline...

1. To create cutting outline around graphic, click graphic once to select it.
2. Click Outline tool on left vertical toolbar.
3. In DesignCentral window on right side of screen...



- a. Enter outline distance (in inches) in **second** field (0 means outline is tight against graphic). Click down-arrow next to red color, then choose purplish "CutContour" color.
- b. Click green checkmark **once** to create cutting outline. (see note in next column)



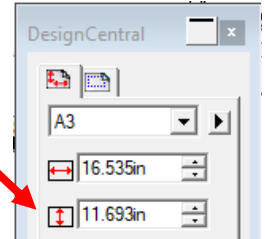
Note: If nothing happens with green checkmark, do not click the checkmark repeatedly. If you zoom in, you will see a fine cutting line around it.

Set page length...

1. After placing graphics that you want to use (and made cutting outlines for them)...

- a. Adjust paper length (in DesignCentral window) so that the **bottom of page** is tight against the bottom of graphics, press Enter.

IMPORTANT: There should be no whitespace below the graphics!



Print design...

1. Click blue "printer" icon in top toolbar.



2. In Send to Device window, click Print Parameters button.

3. Click Quality Tab...

- a. Set Media Type to "Generic Vinyl".

4. Click Cut Controls tab...

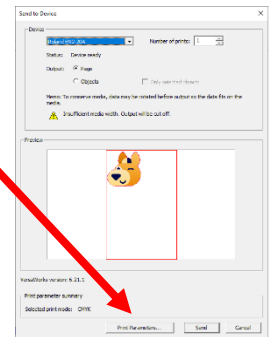
- a. For heat press vinyl or stickers, set Operation Mode to "Print & Cut". Also enable "Cut All Paths", set "Cut Passes" to 1 times, and set "Cut Image Boundaries" to "Normal Cut".
- b. For all other media, set Operation Mode to "Print Only".

5. Click Other tab...

- a. For heat press vinyl, stickers, or paper, set "Cut Sheet after Output" to "Normal Cut".
- b. For all other media, set "Cut Sheet after Output" to "Disable".

6. Click OK.

7. Click Send.



After printing...

1. When finished printing, lift load lever and remove your piece.
2. **Important: Wrap media back onto spool. Ensure load lever is released (it should be "up").**